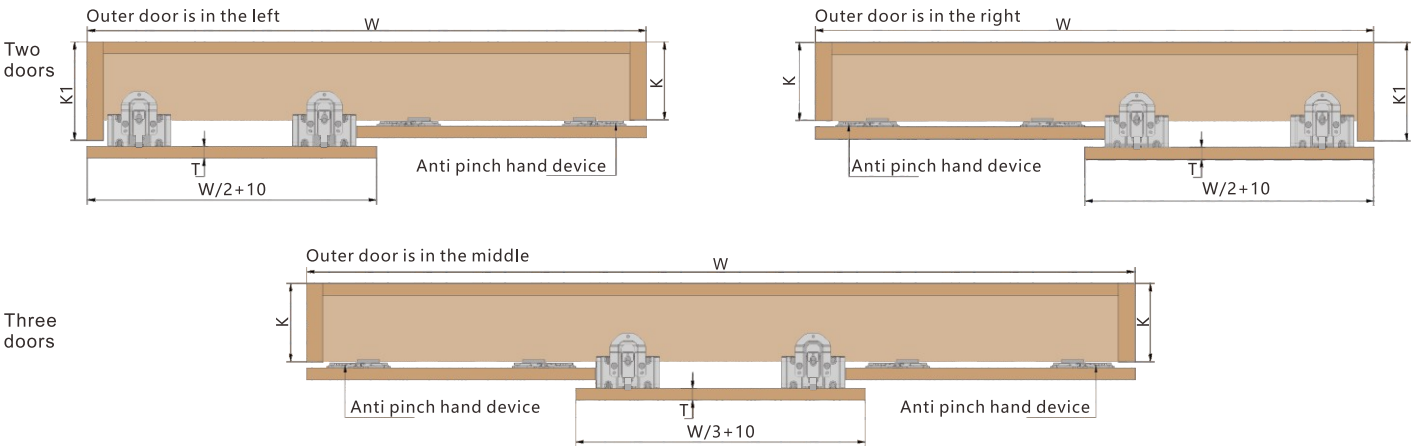


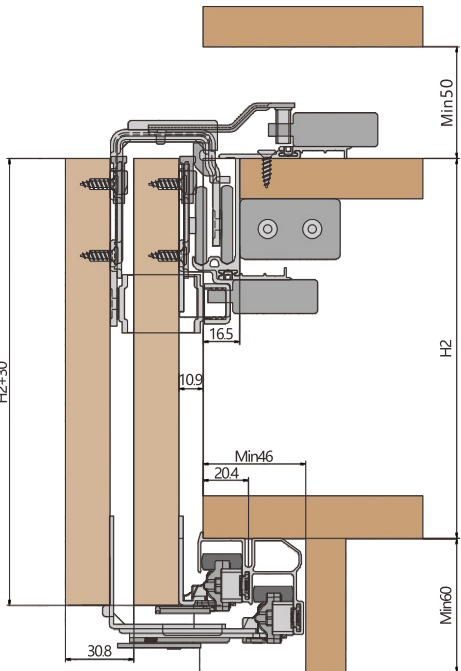
Double Soft Close System Installation Guide

Accessories	QTY			Accessories	QTY			Accessories	QTY		
	2 doors single soft close	2 doors double soft close	3 doors double soft close		2 doors single soft close	2 doors double soft close	3 doors double soft close		2 doors single soft close	2 doors double soft close	3 doors double soft close
Upper runner for outer door (without shifter)	2	0	0	Upper runner for outer door (with shifter)	0	2	2	Left upper damper	1	2	2
Left upper runner for inner door	1	1	2	Right upper runner for inner door	1	1	2	Right upper damper	1	2	2
Down runner for outer door	2	2	2	Down runner for inner door	2	2	4	Down damper	2	4	4
Anti clamp hand devise	1	1	2	Stopper for outer door	1	0	0	Position template	1	1	1
Plastic supportor	2	2	4	Fixing cube	2	2	2	ST4*16 Cross Recessed countersunk head tapping screw	40	40	60
Middle damper T404-509 is needed for 3 doors											

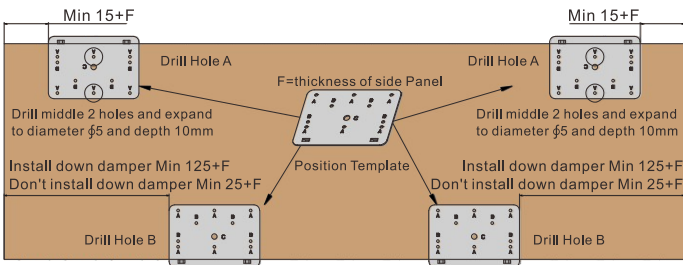
1.Calculation of cabinet size $K1=K+31$ (T =Thickness of door $16\leq T\leq 20$)
Width of door depends on the actual shape of door



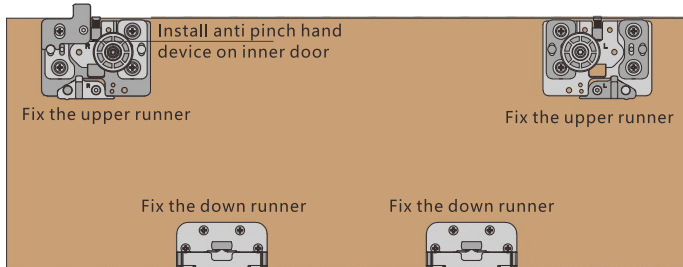
2.Installation dimension



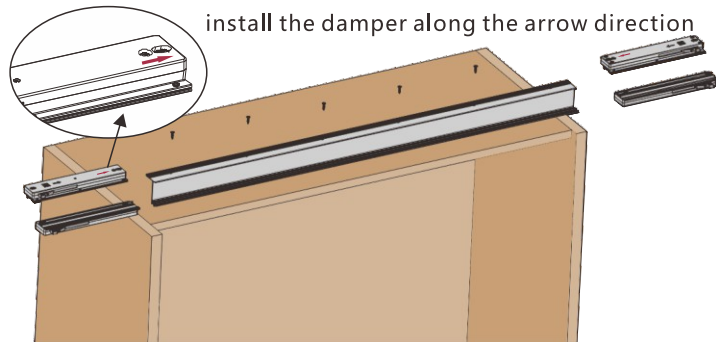
3.Drill size of door and fix accessories



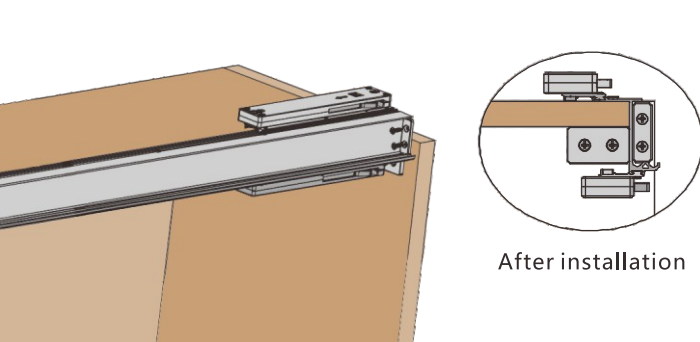
4.Fix fittings; install anti pinch hand device(for option)



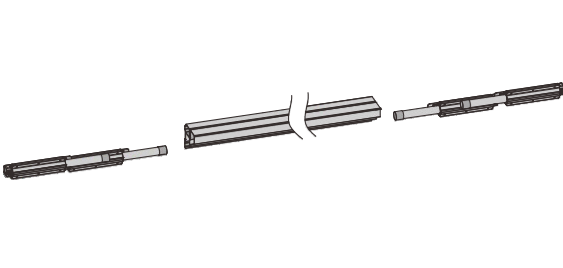
5. Install the upper damper and fix the upper rail



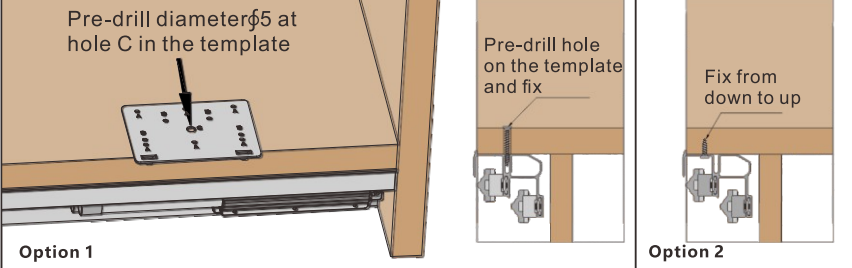
6. Install plastic supportor and anti jump fixing cube



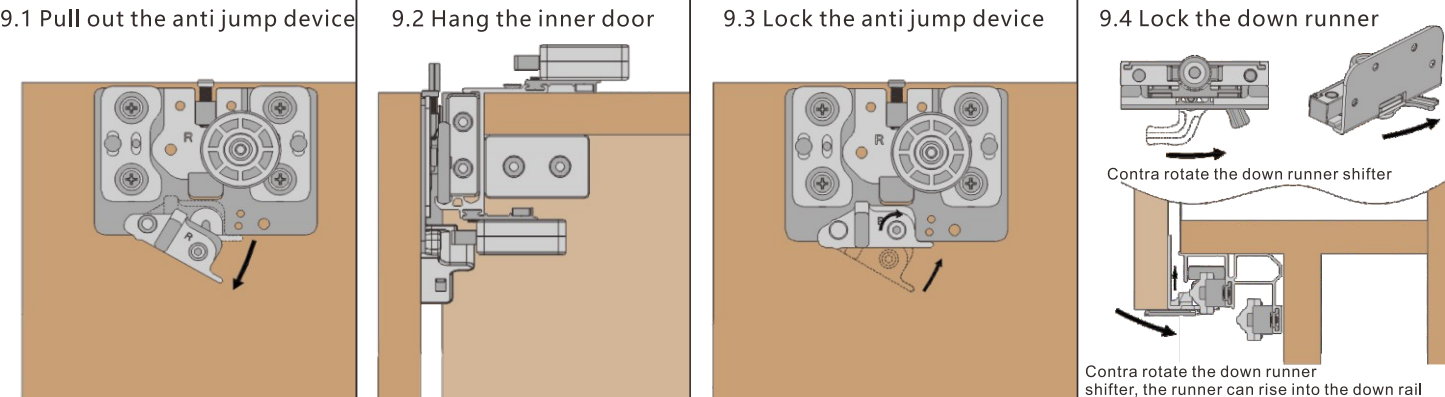
7.Install the down damper in the down rail



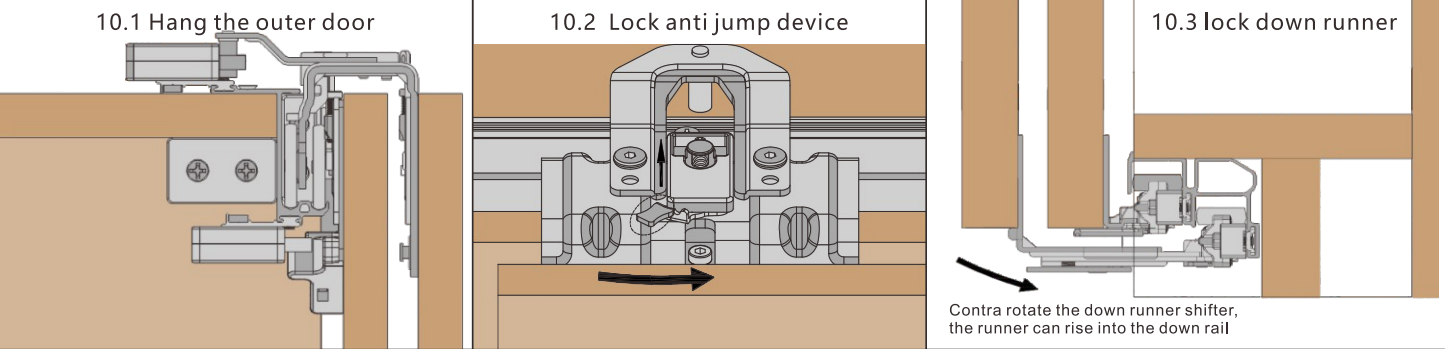
8.Fix the down rail



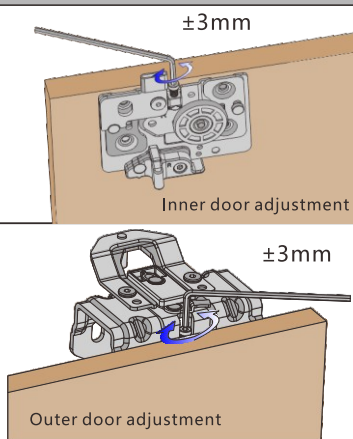
9.Inner door Installation



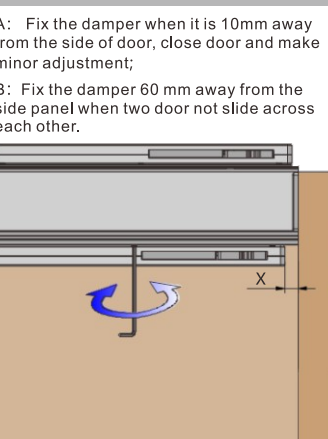
10.Outer door installation



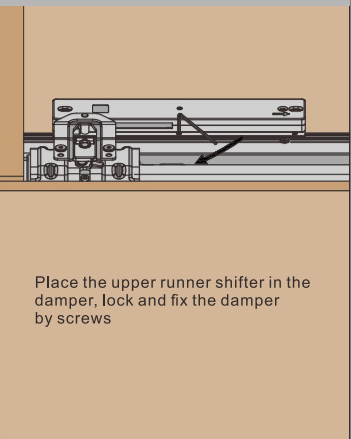
11.Adjustment of Inner and outer door



12. Fix the inner door damper



13.Fix outer door damper



14.Fix down damper

